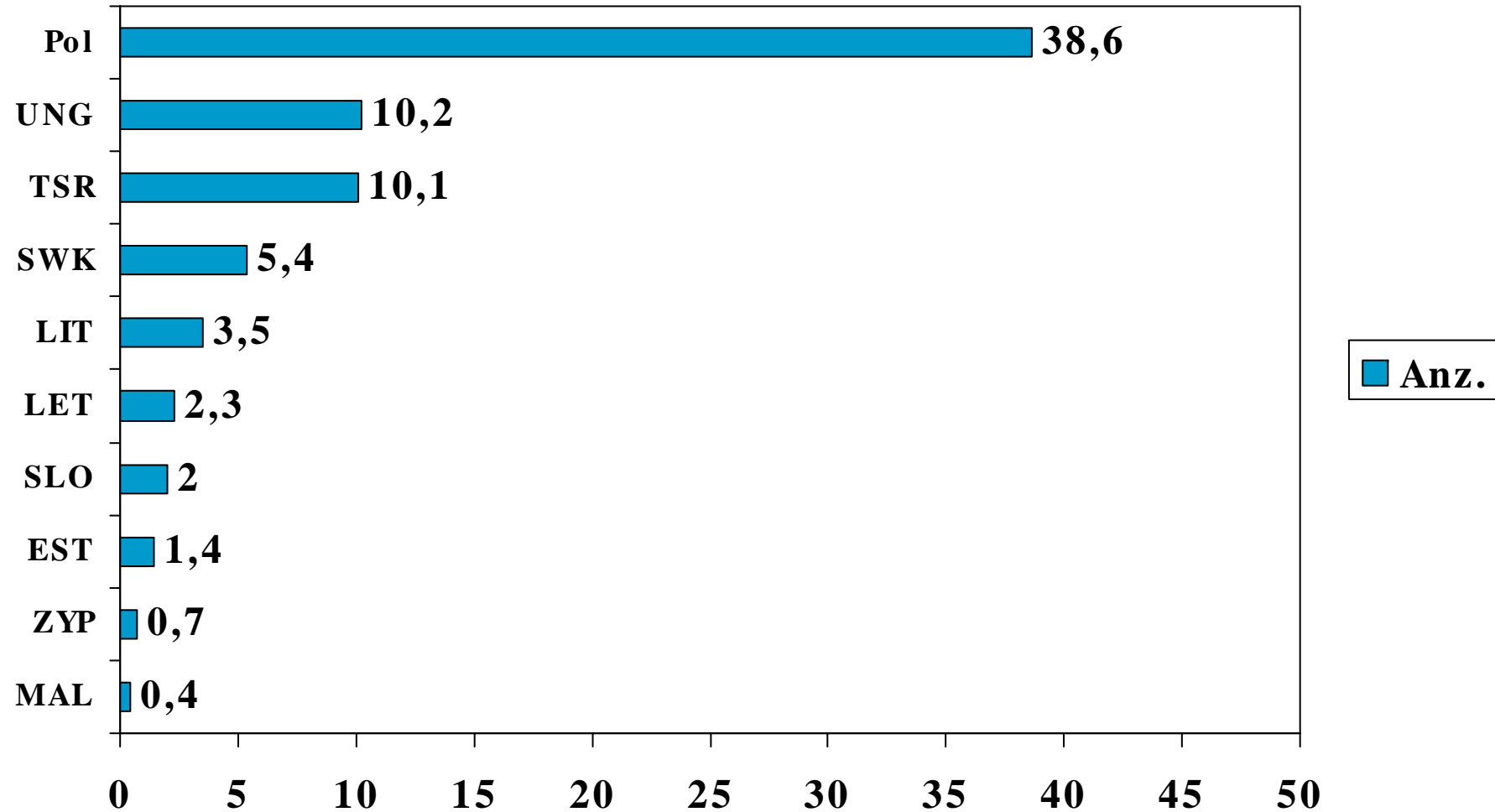
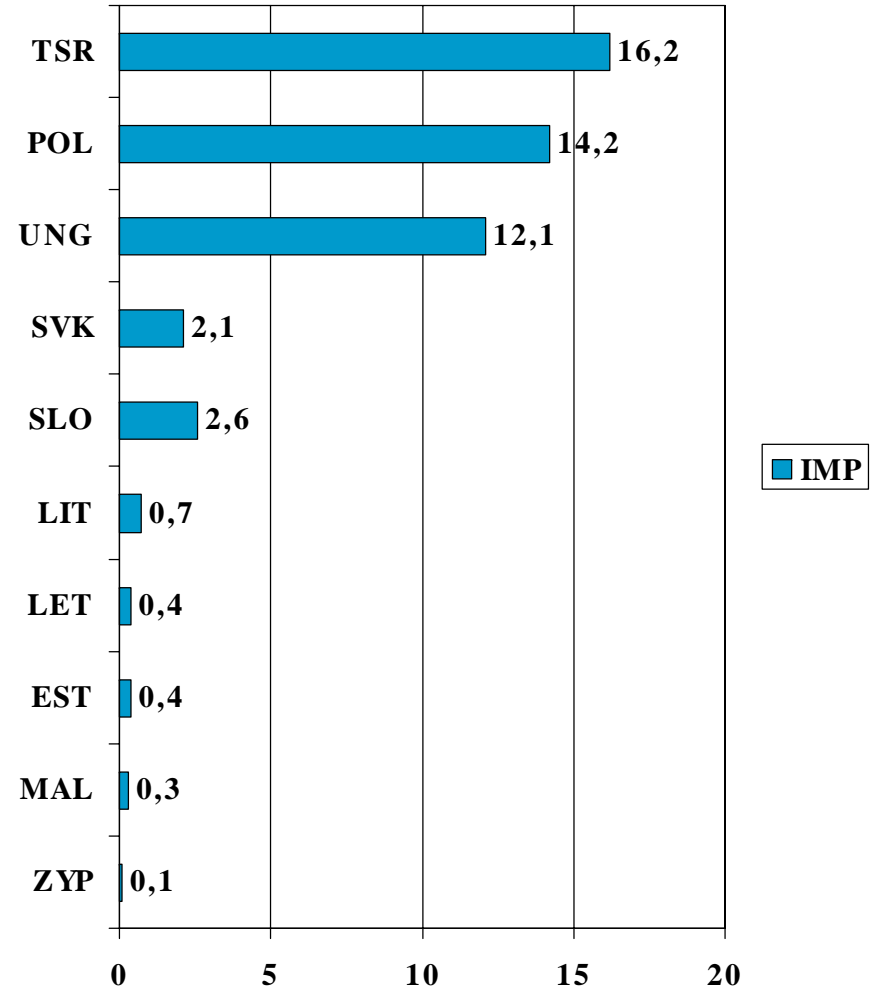
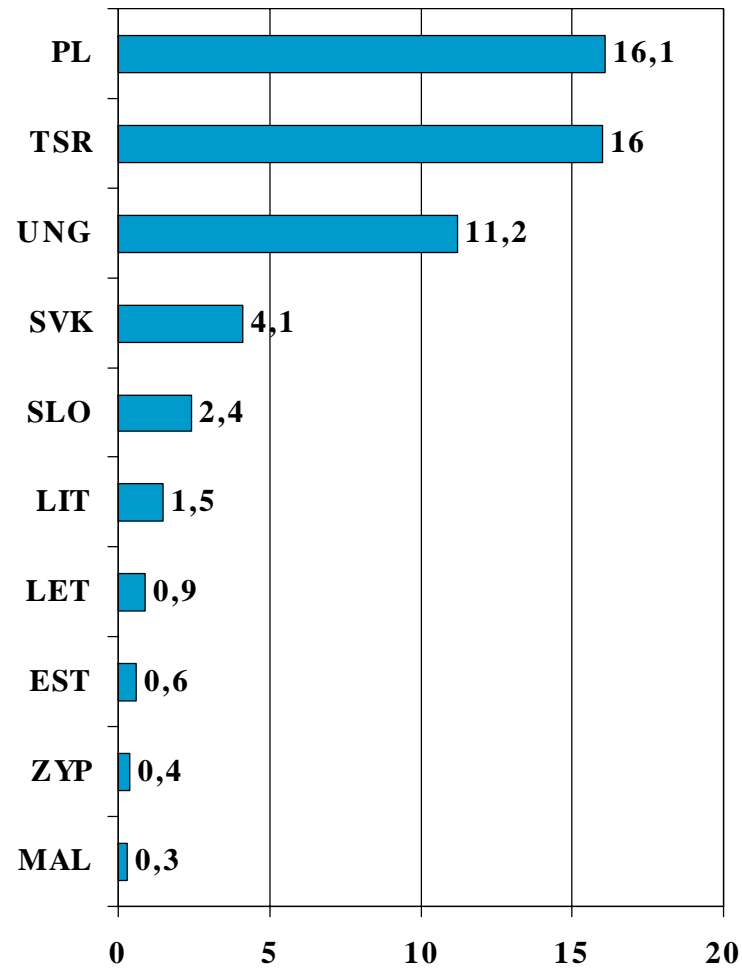


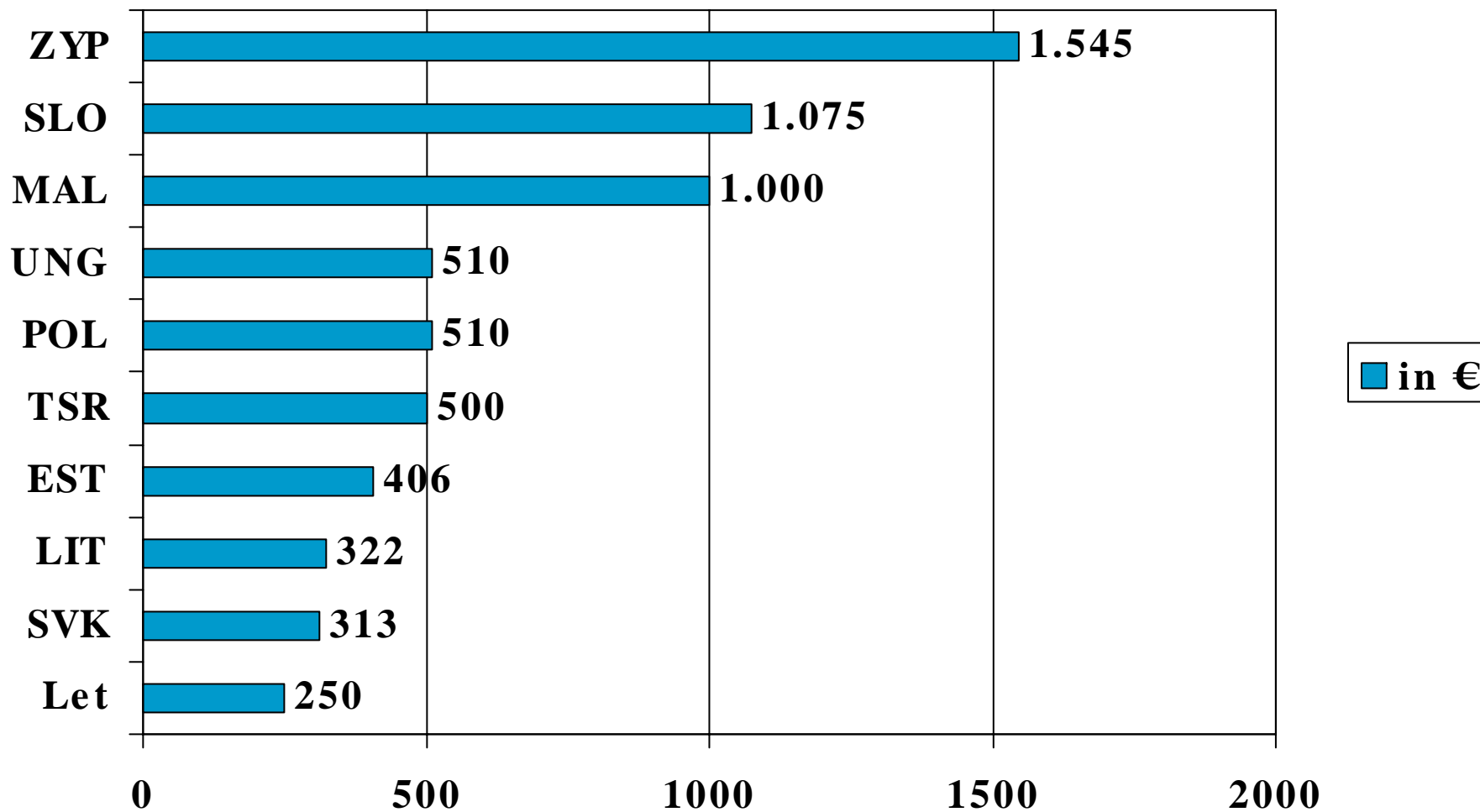
# Bevölkerung in Mio – Stand 2003



# Im- und Export von/nach Deutschland 2002 in Mrd. €



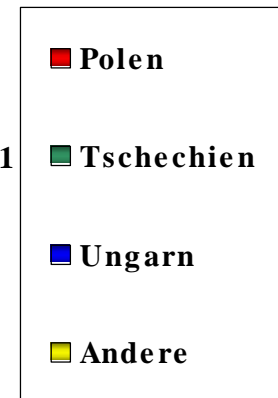
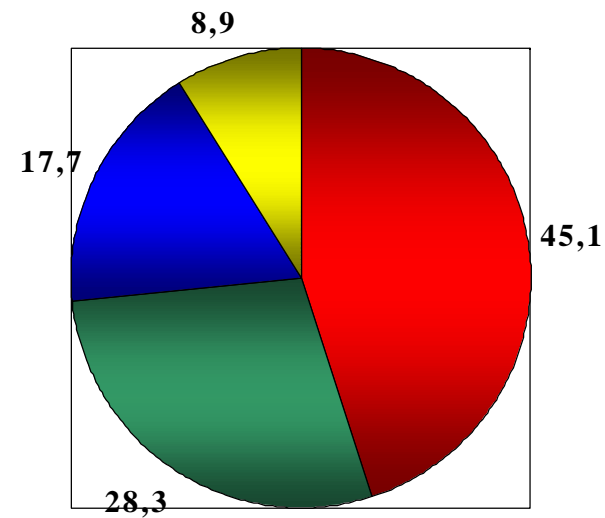
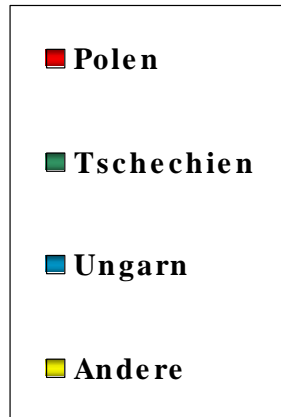
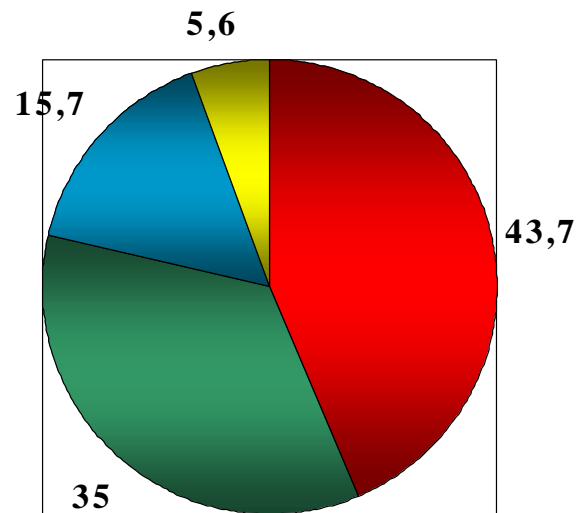
# Durchschnitts-Bruttolöhne 2003 monatlich



# Investitionstätigkeit deutscher Unternehmen

alle Branchen

Dienstleistung



## Arbeitslosenquote 2003 in % der Erwerbspersonen

